



SWR >>

ANOTHER SIDE OF

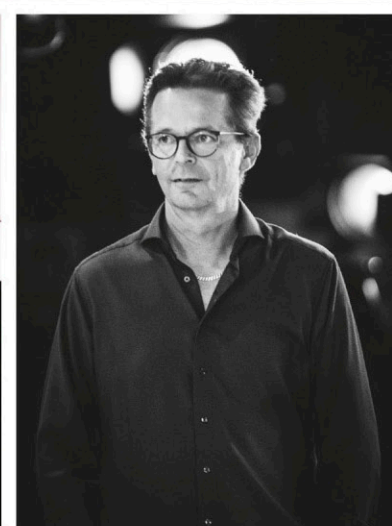
paul carrack

FEATURING THE SWR BIG BAND AND STRINGS





01. **Come Rain Or Come Shine**
(Music: Harold Arlen. Lyrics: Johnny Mercer). Chappell & Co. Inc.
02. **Love Will Keep Us Alive**
(Carrack / Capaldi / Vale).
Notting Hill Music / Plangent Visions Music / Hornall Brothers Music Ltd.
03. **For All We Know**
(Sam Lewis / Fred Coots). Toy Town Tunes Inc.
04. **Learnin' The Blues**
(Dolores "Vicki" Silvers). Barton Music Corp.
05. **How Long**
(Paul Carrack). Minder Music
06. **You Don't Know Me**
(Cindy Walker / Eddy Arnold). Published by Warner Chappell Music, Inc.,
Universal Music Publishing Group, Sony/ATV Music Publishing LLC.
07. **Danny Boy**
(Frederick Edward Weatherly). BYU Music Publishing Group (ASCAP)
08. **What's Shakin' On The Hill**
(Nick Lowe). Plangent Visions Music
09. **I've Got You Under My Skin**
(Cole Porter). Chappell & Co.
10. **At Last**
(Music: Harry Warren. Lyrics: Mack Gordon). Twentieth Century Music Corp.
11. **I Don't Know Enough About You**
(Peggy Lee / Dave Barbour). Denslow Music Inc.
12. **Sticks And Stones**
(Titus Turner). Tangerine Music (BMI).
13. **The Living Years**
(B.A. Robertson / Mike Rutherford). R&BA Music / Mike Rutherford Music





MUSICAL DIRECTOR Klaus Wagenleiter

DIRECTOR OF THE SWR BIG BAND GmbH Rudi Reindl

TRUMPETS Nemajia Jovanovic LEAD. Felice Civitareale, Karl Farrent, Rudi Reindl

TROMBONES Marc Godfroid LEAD. Jürgen Neudert, Lukas Jochner. Georg Maus BASS TROMBONE

WOODWINDS Klaus Graf LEAD ALTO SAX

Matthias Erlewein ALTO SAX. Andi Maile, Alexander Bühl TENOR SAX. Pierre Paquette BARITONE SAX

RHYTHM SECTION Guido Jöris DRUMS, BACKING VOCALS. Decebal Badila BASS.

Klaus-Peter Schöpfer GUITAR, BACKING VOCALS. Jo Barnikel PIANO, KEYS. Frank Behle PERCUSSION

FIRST VIOLINS Silke Meyer-Eggen LEADER. Lesia Ponomarova, Larissa Manz

VIOLAS Mitsuko Nakan, Ayano Kamei

SECOND VIOLINS Harald E. Paul, Jing Siefert-Wen, Julia Richtberg

CELLI Markus Tillier, Alexandru Richtberg

DIRECTOR OF PHOTOGRAPHY Georg Steinweh, Jacqueline Appel

GRIPS David Rösch, Felix Tisch, Dirk Thiel, Teelke Uffen, Isabell Orner, Erick Rottmann

EDITING Keith Mottram, Alexander Erhardt

CAMERAS Eva Gensch, Tim Hägele, Peter-Michael Klumpp, Hanfried Rothe, Thomas Schäfer, Johannes Rühle, Andreas Enderle

LIGHTS Uwe Zimmermann, Markus Gaßner, Arne Klopsch, Wolfgang-Michael Werner, Jannik Boras

TV CREDITS DESIGN Donata Bil

STILLS PHOTOGRAPHY Lena Semmelroggen www.smashingsnapshots.com

DESIGN Ian Ross www.ianrossdesigner.com





RECORDED & MIXED BY Klaus-Peter Schöpfer and Volker Neumann

MASTERED BY Graham Bonnett

SOUND Klaus-Peter Schöpfer, Volker Neumann, Boris Kellenbenz, Oliver Seiler, Detlef Büttner, Walter Schmid, Jürgen Stauber

STUDIO DESIGN Stefan Schaaf-Zimmermann

COLOUR GRADING Alexander Erhardt

MAKE-UP Uwe Markus Stahl, Isabel Hellstern, Katerina Babatziani, Lisa Hilpert, Petra Beck, Lilli Langer

SET PRODUCTION TEAM Reiner Layer, Frank Aumüller, Bruno Imhof, Klaus Bauer, Uwe Herrmann, Hans-Peter Mindermann, Kerstin Mayer, Jens Mühlhäuser, Uwe Lohse, Rainer Ullrich, Peter Draxler, Michael Aberle, Patrick Cattarius, Simon Exner, Sandra Roth, Lisa Schwerböke, Kai Repphun, Bernd Huber

PIANO TUNING Werner Singer

STAGE CREW Florian Seeg, Susanne Bopp-Orak, Wasili Chrisohydis, Patrick Grötz, Hans-Martin Engenhardt, Nicolas Zanola, Melanie Buchert

SWR BIG BAND PRODUCTION Wolfgang Preiß, Amelie Rehme

TV PRODUCTION Nils Jetter

FLOOR MANAGER Michael Seifer

UNIT MANAGER Martina Schreiber

SWR CLASSIC EDITOR Harald Letfuß

BLU-RAY POST PRODUCTION SUPERVISOR Jon Thompson

PRODUCED BY Paul Carrack, Peter Van Hooke (CARRACK-UK), Hans-Peter Zachary (SWR)

DIRECTOR Keith Mottram





WWW.PAULCARRACK.NET
WWW.SWR.DE

Also available on Blu-ray via Paul's website: www.paulcarrack.net (SHOP)

AN SWR / CARRACK-UK CO-PRODUCTION ©©2020 Carrack-UK / SWR Media GmbH. Unauthorised copying, reproduction, hiring, lending, public performance and broadcasting prohibited. All rights reserved. Unauthorised duplication is a violation of applicable laws. PCARIT34